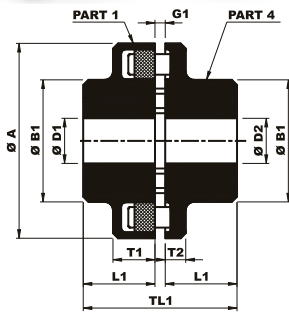
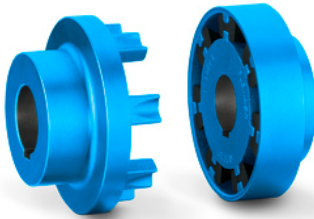
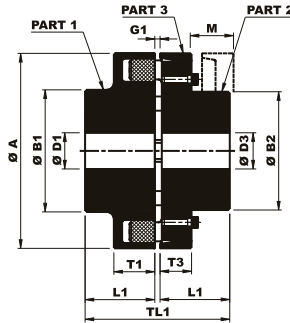
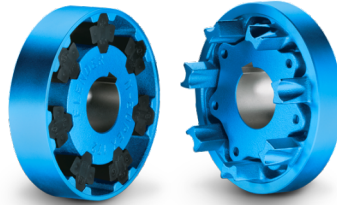


This coupling includes high graded cast iron hubs and a set of 'H' shaped rubber which accommodates parallel, angular, axial misalignments.



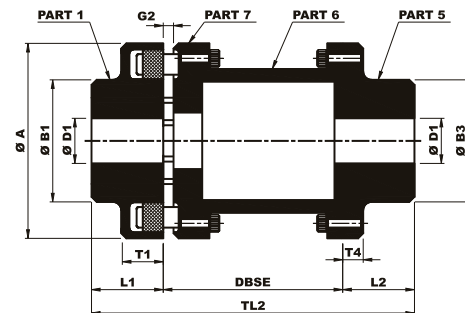
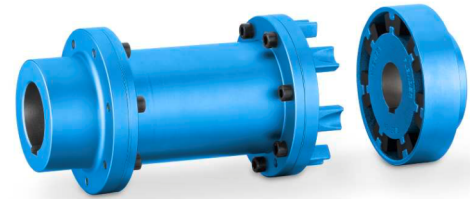
BN (B)

SIZES - 68 TO 250



BN (A)

SIZES - 110 TO 250



BN (H)

SIZES - 80 TO 250

Coupling Size	Rated Torque N-m	Kw at 100 RPM	Max. Speed RPM	Max. Bore (mm)			Dimensions (mm)														Weight (Kg)			M.I (WR ²) Kg-m ²		
				D1	D2	D3	ØA	ØB1	ØB2	ØB3	L1	L2	T1	T2	T3	T4	M	DBSE	TL1	TL2	RN (B)	RN (A)	RNS (H)	RN (B)	RN (A)	RNS (H)
68 B	34	0.36	5000	24	28	-	68	46	-	-	20	-	21	8	-	-	-	43	-	0.63	-	-	0.0003	-	-	
80 B,H	60	0.63	5000	30	38	-	80	68	-	55	30	45	31	10	-	7	-	100 140	63	175 215	1.51	-	2.8 2.9	0.0012	-	0.0014 0.0015
95 B,H	100	1.1	5000	42	42	-	95	76	-	70	35	45	30	12	-	9	-	100 140	73	180 220	2.6	-	3.9 4.2	0.0027	-	0.0028 0.0031
110 A,B,H	160	1.7	5000	48	48	38	110	86	62	80	40	50	34	14	20	11	33	100 140 180	83	190 230 270	3.9	3.5	5.8 6.2 6.6	0.0055	0.0047	0.0056 0.006 0.0064
125 A,B,H	240	2.5	5000	55	55	45	125	100	75	90	50	50	36	18	23	11	38	100 140 180	103	200 240 280	6.2	5.6	8.2 8.7 9.2	0.0107	0.0095	0.0099 0.010 0.011
140 A,B,H	360	3.8	4900	60	60	50	140	100	82	100	55	65	34	20	28	15	43	140 180	113	260 300	6.9	7	11.8 12.3	0.014	0.015	0.019 0.020
160 A,B,H	560	5.9	4250	65	65	58	160	108	95	108	60	70	39	20	28	15	47	140 180	124	270 310	9.4	9.8	15.2 16.0	0.025	0.028	0.032 0.034
180 A,B,H	880	9.2	3800	75	75	65	180	125	108	125	70	80	42	20	30	15	50	140 180	144	290 330	14	14.2	21.0 21.9	0.045	0.049	0.054 0.058
200 A,B,H	1340	14	3400	85	85	75	200	140	122	140	80	90	47	24	32	18	53	180 200 250	164	350 370 420	20	19.8	30.3 30.9 32.1	0.08	0.085	0.100 0.105 0.110
225 A,B,H	2000	21	3000	90	90	85	225	150	138	150	90	100	52	18	38	18	61	180 200 250	84	370 390 440	24.5	27	39 39.7 41.5	0.135	0.15	0.160 0.170 0.180
250 A,B,H	2800	29	2750	100	100	95	250	165	155	165	100	110	60	18	42	21	69	200 250	205	410 460	34	37	54.7 56.5	0.23	0.25	0.280 0.300

- G1 = 2-4mm for sizes 68 to 140, 2-6 mm for sizes 160 to 225 & 3-8 mm for size 250.
- G2 = 5 mm for sizes 80 to 140, 6 mm for sizes 160 to 225 & 8 mm for size 250.

B.V. Transmission Industries

Unit 18 , Khyati Industrial Estate,
Laxmi Nagar, Link Road , Goregaon West,
Mumbai - 400104, Maharashtra , India

Tel : +91- 22-28762345
Tel : +91- 22-28767941
☎ : +91- 93247 18035
☎ : +91- 98206 92004

email :: sales@bvchains.com
bvchain@gmail.com
web:: www.bvchains.com